



**ACERCHINA**

# Acerchina

**ACERCHINA** starts its activities in year 2009 with the objective to build up a Chinese supplier panel to source different components into European market.

**ACERCHINA** puts at disposal of customers our structure located at China and our “know how” of a profesional team with a long experience in the industry, specially in the automotive industry.

**ACERCHINA** main goal is to create strong and long buildings between Asian and European markets. Its guaranteed the quality, standards and conditions used to European market.



## LOCATIONS

### HEAD OFFICES

● Madrid - SPAIN

### SALES OFFICES

■ Germany

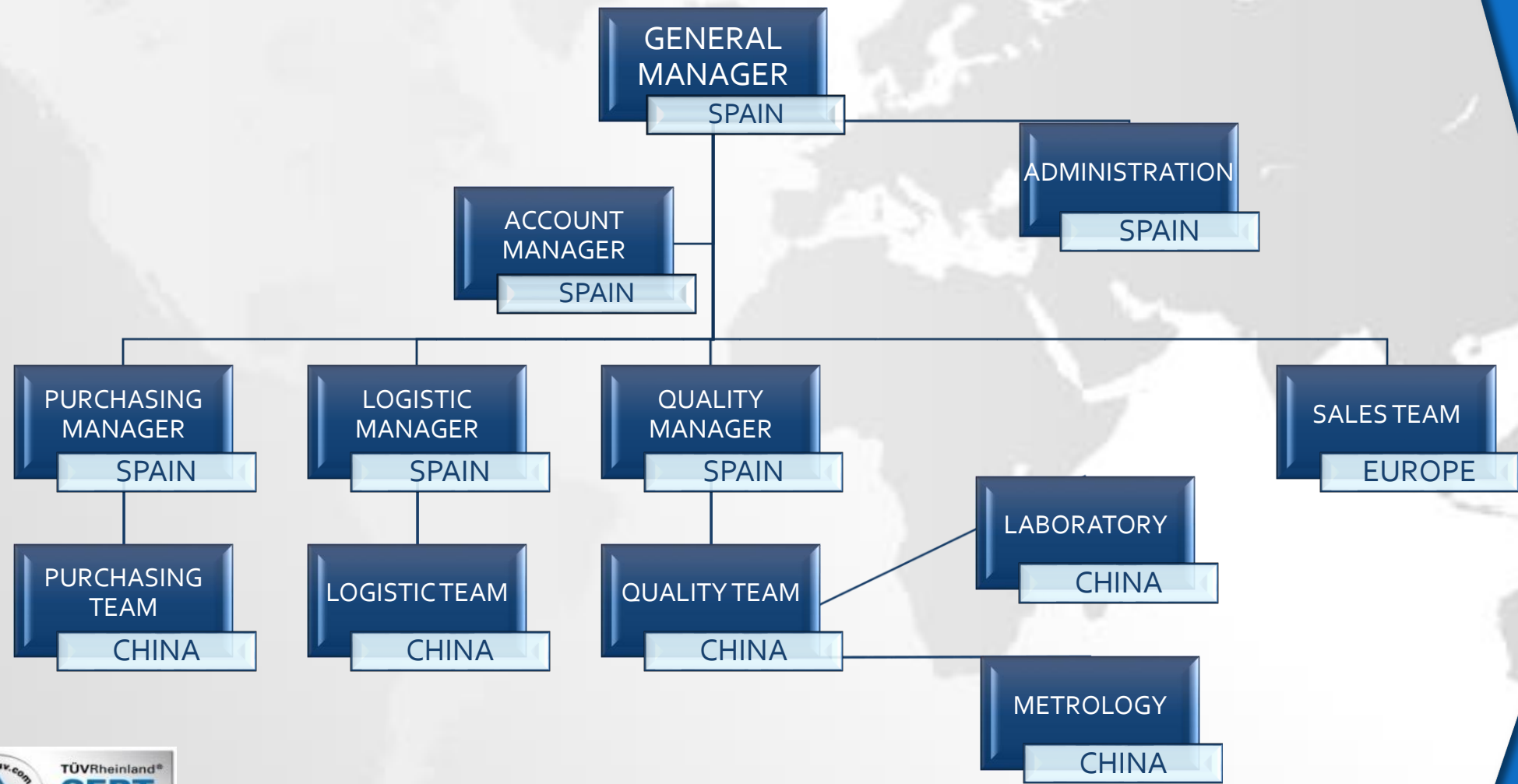
### OFFICES AT CHINA

- Beijing
- Shanghai
- Suzhou
- Guangzhou

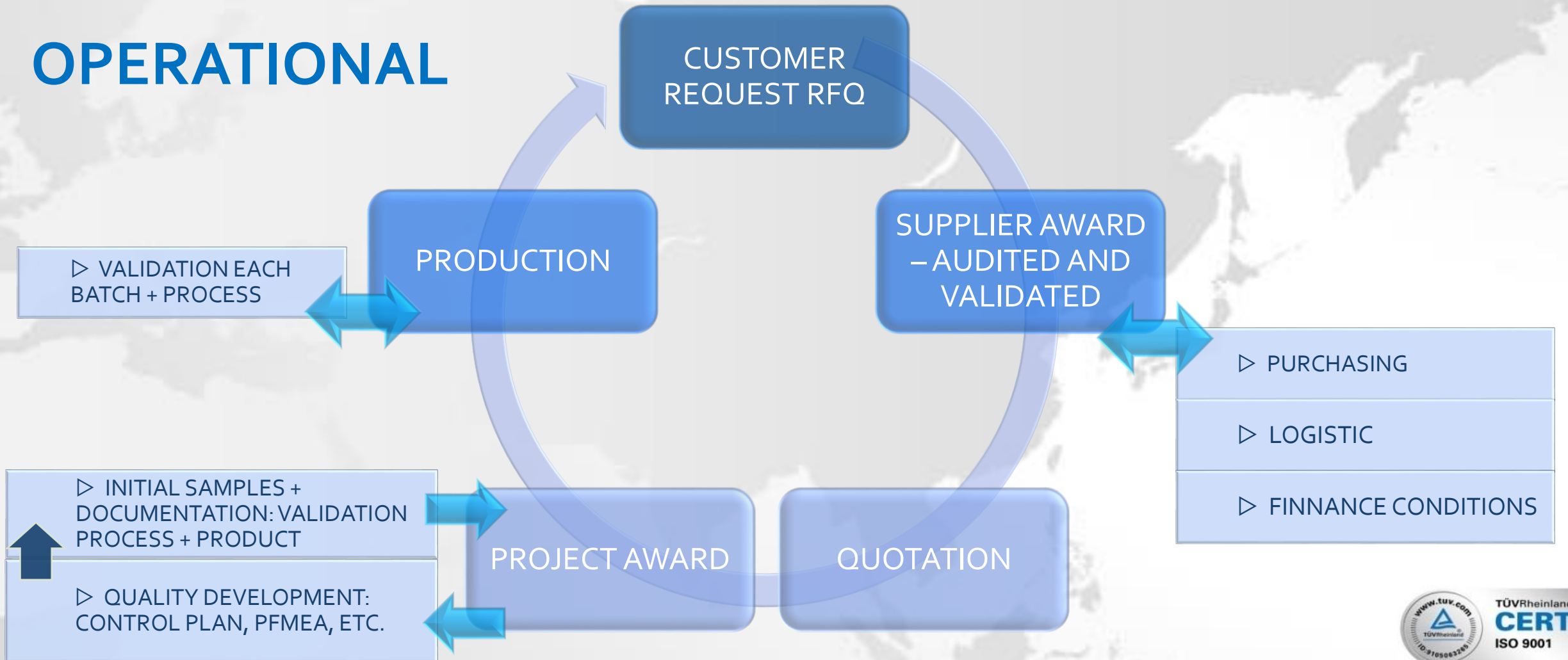


# ORGANIZATION

Ac  
er  
ch  
in  
a



## OPERATIONAL

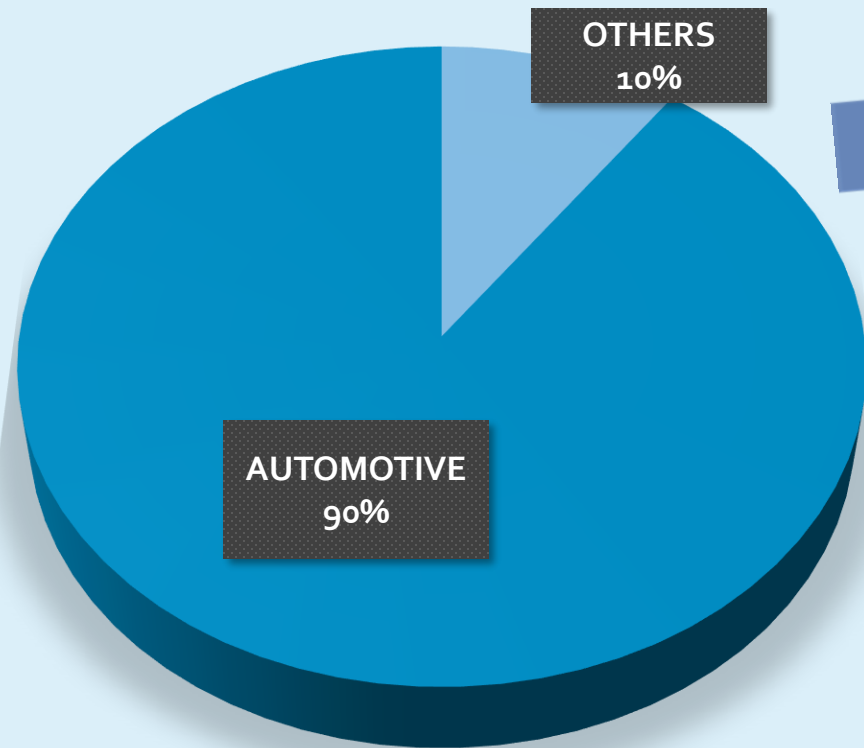


## QUALITY

- ❑ Our quality requirements are suited to the most demanding market, such as the automotive industry.
- ❑ Development of individual control plans according to the requirements of each customer and each product.
- ❑ Our technical team supervise and guarantee quality requirements requested on each production batch.
- ❑ All suppliers are audited and validated frequently by our technical team.
- ❑ Certified with ISO 9001:2008 since year 2011. Keeping our commitment to Quality through regular and renewals. All our suppliers must be certified with ISO 9001, most of them IATF 16949



## AREAS



INDUSTRIAL  
30%

NAVAL  
10%

OTHERS

AGRICULTURE  
60%

AFTERMARKET 5%

AUTOMOTIVE

OEM  
95%

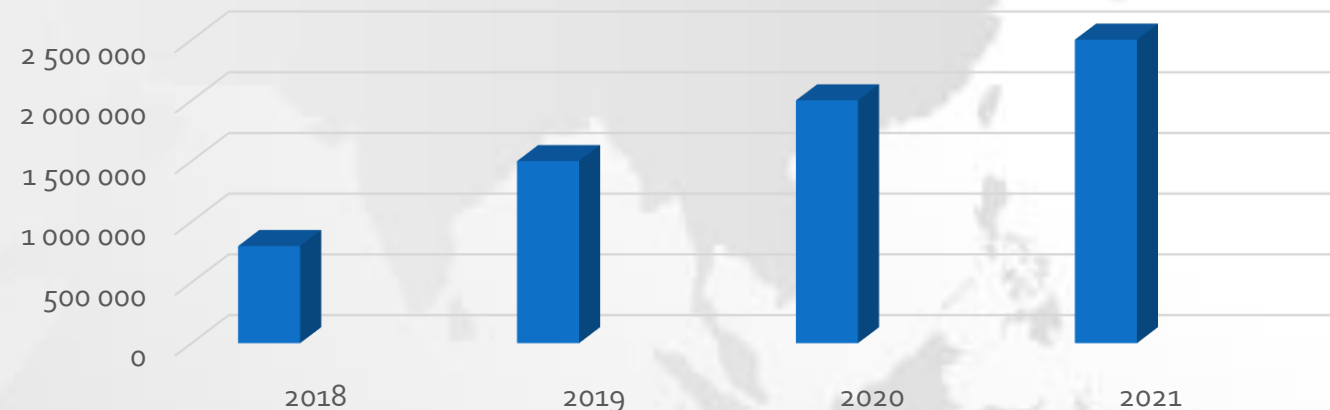
## KEY POINTS

- ❑ Extensive **experience and knowledge** of the Asian market. Our team is formed by Chinese engineers supervised by our technical team.
- ❑ Adaptation of our work to the **demands and needs** of each customer.
- ❑ **Extensive network** and structure manufacturers in the Chinese market available to our customers under western condition.
- ❑ Its **guaranteed the Quality** of the process and the product through our quality system for each production batch.



## HINGE SUPPLIER PANEL

- ❑ Actually, we have 4 manufacturing plants audited and validated by our European customers to cover all capacities for forging hinge product
- ❑ We cover forging lines from 400 tns up to 2.500 tns (multicavity forging for small parts)
- ❑ Auxiliary operations like bending, cold adjusting, punching, machining are available.
- ❑ Volume of hinges:



# acerchina

